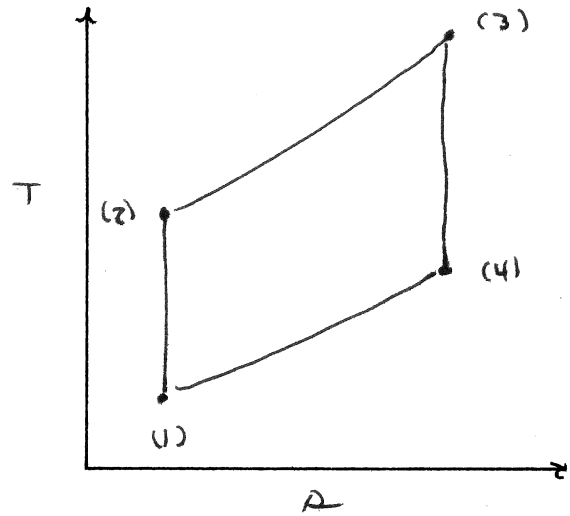
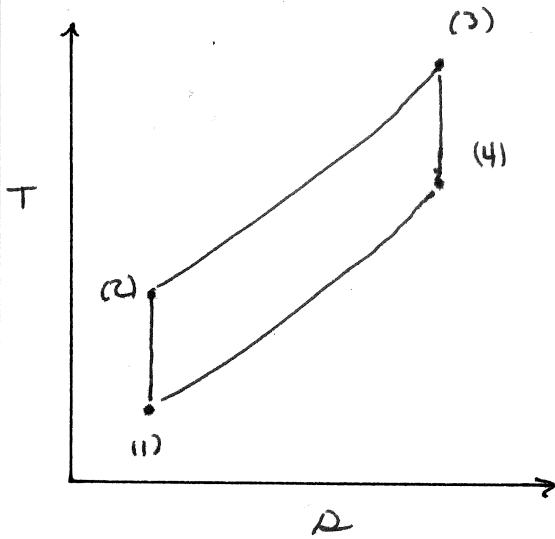




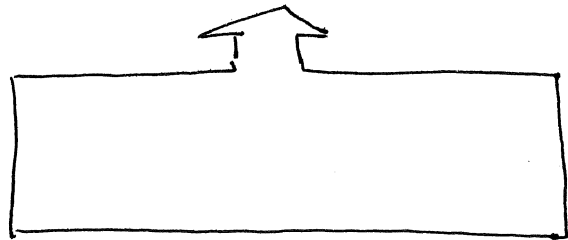
WHEN CAN WE USE REGENERATION?

COMPARE THE TWO BRAYTON CYCLES BELOW.

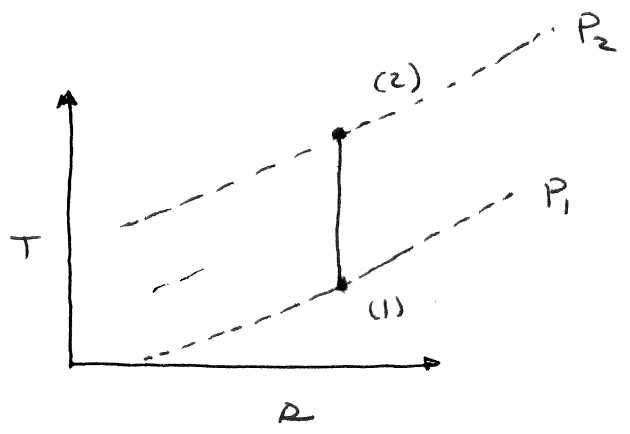
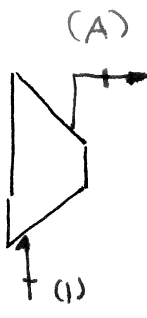


$r_p =$ (LOW) OR (HIGH)
 $\eta =$ (LOW) OR (HIGH)
 $W_{out} =$ (LOW) OR (HIGH)
 $T_4 >, <, = T_2$

$r_p =$ (LOW) OR (HIGH)
 $\eta =$ (LOW) OR (HIGH)
 $W_{out} =$ (LOW) OR (HIGH)
 $T_4 >, <, = T_2$



INTERCOOLING



REHEAT

