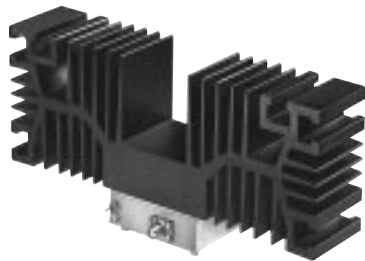
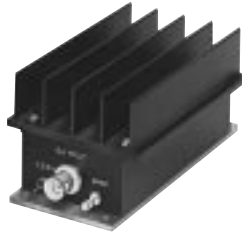


MEDIUM HIGH POWER 50 kHz to 8 GHz



✦ ZVE



ZHL-case T34



ZHL-case S32



ZHL-42

up to 1W (+30 dBm) output

MODEL NO.	FREQ. MHz		GAIN, dB		MAXIMUM POWER, dBm		DYNAMIC RANGE		VSWR Max.		DC POWER		CAPD DATA	CASE STYLE	CONNECTION	Price \$
	f _L	f _U	Min.	Flatness Max.	Output (1 dB Comp.) Min.	Input (no damage)	NF dB Typ.	IP3 dBm Typ.	In	Out	Volt V	Current (A)				
NEW ✦✧ ZHL-450-75	5-450		9.3	±0.7	+26	+20	3.5	+48	2.5:1	1.6:1	12	0.525	FOR DATA SEE YONI ON OUR WEBSITE	S32	—	149.95
NEW ✦✧ ZHL-1010-75	50-1000		9.5	±0.7	+26	+20	3.5	+47	1.5:1	1.5:1	12	0.525		S32	—	149.95
NEW ✦✧ ZHL-1010	50-1000		9.5	±0.6	+26	+22	3.5	46	2:1	2:1	12	0.525		S32	—	149.95
NEW ✦✧ ZHL-2010	50-1000		20	±0.8	+26	+11	3.7	46	2:1	2:1	12	0.90		S32	—	169.95
NEW ✦✧ ZHL-3010	50-1000		30	±1.0	+26	-3	5.5	46	2.5:1	2:1	12	1.0		S32	—	179.95
✦ ZVE-8G	2000-8000		30	±2.0	+30*	+20	4	40	2:1	2:1	12	2.0		BN333	—	1095.00
ZHL-1A	2-500		16	±1.0	+28	+20	11	+38	2:1	2:1	24	0.60		S32	—	229.00
ZHL-2	10-1000		16	±1.0	+29	+15	9	+38	2:1	2:1	24	0.60		T34	—	349.00
ZHL-2-8	10-1000		27	±1.0	+29	+5	10	+38	2:1	2:1	24	0.60		T34	—	525.00
ZHL-211	800-950		20	±0.4	+29	+15	8	+38	1.8:1	1.8:1	24	0.60		T34	—	295.00
△ ZHL-2-12	10-1200		24	±1.0	+29*	+10	10	+38	2:1	2:1	24	0.75		T34	—	625.00
ZHL-3A	0.4-150		24	±1.0	+29.5	+10	11	+38	2:1	2:1	24	0.60		S32	—	229.00
ZHL-32A	0.05-130		25	±1.0	+29	+10	10	+38	2:1	2:1	24	0.60		S32	—	229.00
ZHL-42	700-4200		30	±1.0★	+28	+5	10	+38	2.5:1	2.5:1	15	0.88		U36	—	895.00
ZHL-4240	700-4200		40	±1.5★	+28	-5	8	+38	2.5:1	2.5:1	15	0.90		U36	—	1395.00
ZHL-42W	10-4200		30	±1.5★	+28**	0	8***	+38	2.5:1	2.5:1	15	0.88		U36	—	1095.00
ZHL-4240W	10-4200		40	±1.5★	+28**	-5	8***	+38	2.5:1	2.5:1	15	0.90	U36	—	1495.00	

* +28.5 dBm maximum at 1000-1200 MHz
 ** +27 dBm at 10-700 MHz
 *** Below 100 MHz NF increases to 15 dB at 10 MHz
 ☆At +25°C, +29 dBm typ. at 90°C case
 ★Measured at 25°C.
 ◆ NF gradually increases from 3.5 dB at 50 MHz to 10 dB typ. at 10 MHz



ZHL-50P3

feed-forward, low-distortion

MODEL NO.	FREQ. MHz		GAIN, dB		MAX. POWER, dBm		DYNAMIC RANGE			VSWR	DC POWER		CAPD DATA	CASE STYLE	CONNECTION	Price \$
	f _L	f _U	Min.	Flatness Max.	Output (1 dB Comp.)	Input (no damage)	NF dB Typ.	Intercept Point dBm, Min	3rd* order		In/Out	Volt V.				
ZHL-2-50P3	50-1000		21	±1.0	+25	+15	8	+63	+43	2.0:1	24	0.65	(see YONI on our website)	U200	—	895.00 358.00★

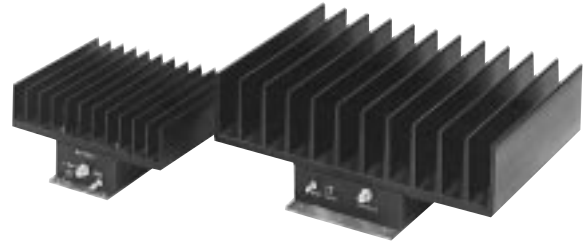
★ WHILE SUPPLIES LAST
 * IP3 measured at +15 dBm output each fundamental tone, at room temperature.
 ** IP2 +50 dBm typical for out band products.

50 Ω

High Power 1 to 1000 MHz



ZHL-WF



ZHL-2W

ZHL-3W
ZHL-5W
ZHL-10W

up to 5W (+37 dBm) output

MODEL NO.	FREQ. MHz		GAIN, dB		MAXIMUM POWER, dBm		DYNAMIC RANGE		VSWR		DC POWER		CAPD DATA	CASE STYLE	CONNECTION NO.	Price \$
	f _L	f _U	Min.	Flatness Max.	Output (1 dB Comp.)	Input (no damage)	NF dB Typ.	IP3 dBm Typ.	In	Out	Volt V	Current (A)				
NEW ZHL-03-5WF	60-300		30	±1.0	+36	+10	4	+47	1.4:1	1.5:1	24	2.8		CP641	—	495.00
ZHL-1-2W	5-500		29	±1.0	+33	+10	12	+44	2:1	2:1	24	0.9	(see YONI on our website)	T35	—	525.00
ZHL-7-2W	600-800		28	±1.0	+33	+10	12	+43	2:1	2:1	24	0.9		T35	—	590.00
ZHL-1000-3W	500-1000		38	±1.0*	+35**	0	9	+45	2:1	2.5:1	24	2.0		DDD338	—	695.00
ZHL-5W-1	1-500		40	±1.5	+37	0	9	+49	2:1	2.5:1	24	3.3		DDD131	—	995.00
ZHL-900-10W	480-900		19	±1.0	+38	+25	10	+50	2:1	2:1	24	5.5		DDD338	—	1995.00

* 1.5 dB over temperature range -20 to +65 deg. C.

** +37 dBm typical

NOTES:

- ☆ High IP3, very high IP2, 68-83 dBm typ.
 - ♣ Hermetically sealed with field replaceable connectors.
 - △ Available only with SMA connectors
 - Denotes 75 ohm model, for coax connector models 75 ohm BNC connectors are standard.
- B. Connector types and case mounted options, case finishes are given in section 0, see "Case styles & outline drawings".
- C. Prices and specifications subject to change without notice.
- D. For Quality Control Procedures see Table of Contents, Section 0, "Mini-Circuits Guarantees Quality" article. For Environmental Specifications see Amplifier Selection Guide.
1. Open load is not recommended, potentially can cause damage. With no load, derate max input power by 20 dB.

NSN GUIDE MCL NO.

MCL NO.	NSN
ZHL-1A	6130-01-088-2322
ZHL-1A(BNC)	5895-01-123-0792
ZHL-1A(SMA)	5895-01-201-4500
ZHL-2-12	5996-01-400-0753
ZHL-3A	5895-01-194-1718
ZHL-32A	5895-01-238-7973
ZHL-42(SMA)	5895-01-253-2397
ZHL-1042J	5996-01-412-3038
ZHL-4240	5895-01-263-5871
ZHL-5W-1	5825-01-339-2539



The Design Engineers Search Engine

Provides Actual Data Instantly
At: <http://www.minicircuits.com>

In Stock... Immediate Delivery
For Custom Versions Of Standard Models
Consult Our Applications Dept.

