

Application Module Student Learning Kit Users Guide featuring the Freescale MC9S12C32

For use with the following part numbers:

**CSM-12C32
APS12C32SLK
PBS12C32SLK**

CONTENTS

CAUTIONARY NOTES	4
FEATURES	5
REFERENCES	6
INTRODUCTION	7
GETTING STARTED	7
OPERATION	7
POWER	8
<i>PWR</i>	8
<i>CONNECTOR J1</i>	8
<i>PWR_SEL JUMPER</i>	8
RESET SWITCH	9
LOW-VOLTAGE DETECT	9
TIMING	9
COMMUNICATIONS	9
<i>COM CONNECTOR</i>	10
<i>CONNECTOR J1</i>	11
USER OPTIONS	11
<i>SWITCHES</i>	11
<i>LED'S</i>	12
DEVELOPMENT SUPPORT	12
ASCII MONITOR OPERATION	12
<i>ASCII MONITOR MEMORY MAP</i>	12
<i>MONITOR COMMANDS</i>	13
<i>INTERRUPT SUPPORT</i>	13
<i>INTERRUPT VECTOR TABLE</i>	14
SERIAL MONITOR OPERATION	15
<i>SERIAL MONITOR MEMORY MAP</i>	15
BDM_PORT HEADER	16

FIGURES

Figure 1: PWR_SEL	8
Figure 2: COM Connector.....	10
Figure 3: MCU_PORT Connector.....	11
Figure 4: BDM_PORT.....	16

TABLES

Table 1: Serial COM Signals	10
Table 2: User Option Jumper Settings.....	11
Table 4: Monitor Commands	13
Table 5: Monitor Memory Map.....	12
Table 6: MON12 Interrupt Vector Table.....	14
Table 7: Serial Monitor Memory Map.....	15

REVISION

August 25, 2006	A	Initial release
-----------------	---	-----------------

Cautionary Notes

- ◆ Electrostatic Discharge (ESD) prevention measures should be used when handling this product. ESD damage is not a warranty repair item.
- ◆ Axiom Manufacturing does not assume any liability arising out of the application or use of any product or circuit described herein; neither does it convey any license under patent rights or the rights of others.
- ◆ EMC Information on the APS12C32SLK module:
 - a) This product as shipped from the factory with associated power supplies and cables, has been verified to meet with requirements of CE and the FCC as a **CLASS B** product.
 - b) This product is designed and intended for use as a development platform for hardware or software in an educational or professional laboratory.
 - c) In a domestic environment, this product may cause radio interference in which case the user may be required to take adequate prevention measures.
 - d) Attaching additional wiring to this product or modifying the products operation from the factory default as shipped may effect its performance and cause interference with nearby electronic equipment. If such interference is detected, suitable mitigating measures should be taken.

TERMINOLOGY

This module uses option selection jumpers and cut-traces to setup default configuration. Terminology for application of the option jumpers is as follows:

Jumper – a plastic shunt that connects 2 terminals electrically

Jumper on, in, or installed - jumper is installed such that 2 pins are connected together

Jumper off, out, or idle - jumper is installed on 1 pin only. It is recommended that jumpers be idled by installing on 1 pin so they will not be lost.

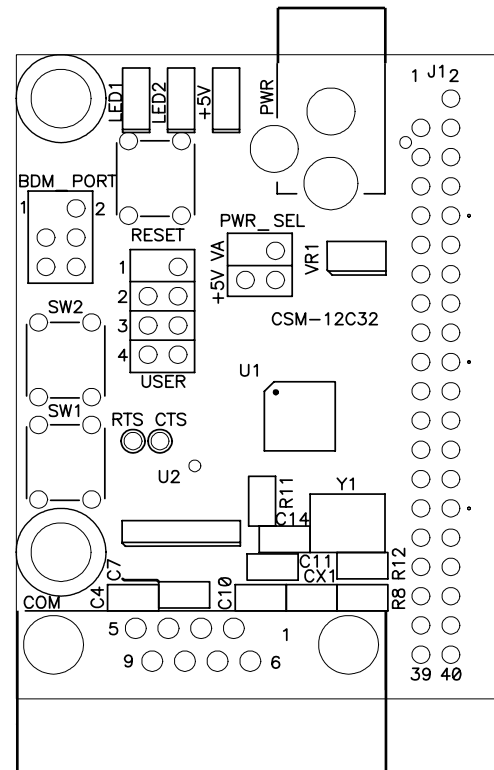
Cut-Trace – a circuit trace connection between component pads. The circuit trace may be cut using a razor knife to break the default connection. To reconnect the circuit, simply install a suitably sized 0-ohm resistor or attach a wire across the pads.

FEATURES

The APS12C32SLK is an educational application module for the Freescale Semiconductor MC9S12C32 microcontroller. Application module SLK's include components for out-of-box operation and are preprogrammed with a serial monitor to make application development quick and easy. A background DEBUG port is provided for development tool use and is compatible with HCS12 BDM interface cables and software. The 40-pin connector allows the APS12C32SLK module to be connected to an expanded evaluation environment such as the Microcontroller Project Board Student Learning Kit (PBMCUSLK) or user's custom PCB.

Features:

- ◆ MC9S12C32 MCU, 48 QFP
 - ◆ 32K Byte Flash EEPROM
 - ◆ 2K Bytes RAM
 - ◆ 31 I/O lines
 - ◆ Timer/PWM
 - ◆ SCI and SPI Communications Ports
 - ◆ Key Wake-up Port
 - ◆ BDM DEBUG Port
 - ◆ CAN 2.0 Module
 - ◆ Analog Comparator
 - ◆ 8 MHz Internal Bus Operation Default
 - ◆ 25 MHz Bus Operation using internal PLL
 - ◆ +3.3VDC to +5VDC operation
- ◆ Power Input Selection Jumper
- ◆ On-board, regulated +5V power supply
- ◆ Optional power input/output from Connector J1
- ◆ 16 MHz Ceramic Resonator
- ◆ RS-232 Serial Port w/ DB9 Connector
- ◆ 8-Ch, 10-bit, Analog Comparator with full rail-to-rail operation and external trigger capability
- ◆ 8-Channel, 16-bit Timer with Input Capture, Output Compare, and PWM capabilities
- ◆ User Components Provided
 - ◆ 3 Push Button Switches: 2 User, RESET
 - ◆ 3 LED Indicators: 2 User, VDD
- ◆ Jumpers
 - ◆ Disable User Components
 - ◆ Power Select
- ◆ Connectors
 - ◆ 40 pin connector provides access to most MCU I/O signals
 - ◆ 2.0mm Barrel Connector Power Input
 - ◆ DEBUG BDM Connector
 - ◆ DB9 Communications Connector
- ◆ Supplied with DB9 Serial Cable, Documentation (CD), Manual, and Wall plug type power supply.



Specifications:

Module Size 2.2" x 1.6"

Power Input: +9VDC @ 200 mA typical, +6 to +16VDC range

References

Reference documents are provided on the support CD in Acrobat Reader format. More information can be found in the Application Notes section of the Freescale Web site.

APS12C32SLKSCHEM.pdf	APS12C32SLK Application Module Schematic
APS12C32SLKUG.pdf	APS12C32SLK User Guide
9S12C32DGV1.pdf	MC9S12C32 Device User Guide
9S12C32_ZIP.zip	Zip file containing Device Block User Guides
APS12C32SLKQSUG.pdf	Quick Start Guide for use with stand-alone module
APS12C32SLKSW.zip	CodeWarrior project for use with APS12C32SLK_QSUG
AN2548.pdf	Serial Monitor Program for HCS12 MCU's

The following reference documents are for using the application module in conjunction with the Freescale Microcontroller Project Board Student Learning Kit:

PBS12C32SLKQSUG.pdf	Quick Start Guide for application module use with PBMCUSLK
PBS12C32SLKSW.zip	CodeWarrior project for use with PBS12C32SLK_QSUG

Visit www.freescale.com/universityprogram for current product information, reference materials and updates.

INTRODUCTION

Before using this module, the user should be familiar with the hardware and software operation of the target MCU. Refer to the MC9S12C32 User Manual and MC9S12C32 Reference Manual for details on MCU operation. The module's purpose is to promote the features of the MC9S12C32 and to assist the user in quickly developing an application in a known working environment. Users should be familiar with memory mapping, memory types, and embedded software design for quick, successful, application development.

The APS12C32SLK Educational Module is a fully assembled, fully functional module supporting Freescale MC9S12C32 microcontroller. The module comes with a serial cable, power supply, and an embedded monitor for stand-alone operation. Support software for this module is provided for Windows 95/98/NT/2000/XP operating systems.

Application development may be performed by using the embedded monitor, or any compatible BDM cable with supporting host software. The embedded monitor provides an effective, low cost, debug method. Note that when a BDM cable is used for debugging, the BDM pod should be powered from an external supply.

GETTING STARTED

Please refer to the APS12C32SLK Quick Start Users Guide to quickly setup the stand-alone application module or PBS12C32SLK Quick Start Users Guide to get started with the microcontroller project board (PBMCUSLK).

Operation

The APS12C32SLK module provides input and output features designed to assist embedded application development. Access to the MCU port signals is available through module connector J1. This connector may also be used to input power to the module or to output power to attached modules. RS-232 communications signals may also be input through connector J1. Care must be exercised when using the J1 to power the module, as only regulated voltage in the range of +3.3V to +5V should be supplied to this connection. The on-board regulator provides a fixed +5V voltage to the module.

Five user option jumpers and 3 cut-traces control module operation. Enabling a user option requires installing a jumper across the associated header pins. Removing the jumper disables the associated option. An option enabled by a cut-trace can be disabled by removing the circuit trace between the cut-trace component pads. Use a sharp knife to cut the embedded circuit trace. Be careful not to damage adjacent circuitry. To re-enable the option, simply install a 1206 sized 0-ohm resistor or piece of wire across the cut-trace component pads.

Power

Power is supplied to the module through a 2.0mm barrel connector at location PWR for stand-alone operation. The module may also be powered through connector J1 when connected to the PBMCUSLK. Power may be sourced off-module through connector J1 to external circuitry. Power routing on the module is determined by the PWR_SEL jumper.

PWR

The PWR connector accepts a 2.1mm, center-positive, barrel plug that allows the module to be powered from a wall-plug transformer or from a desktop power supply. Input voltage should be limited to between +7V and +20V. Input voltage of +9VDC is typical. This input supplies the on-board +5V regulator that powers the module.

Connector J1

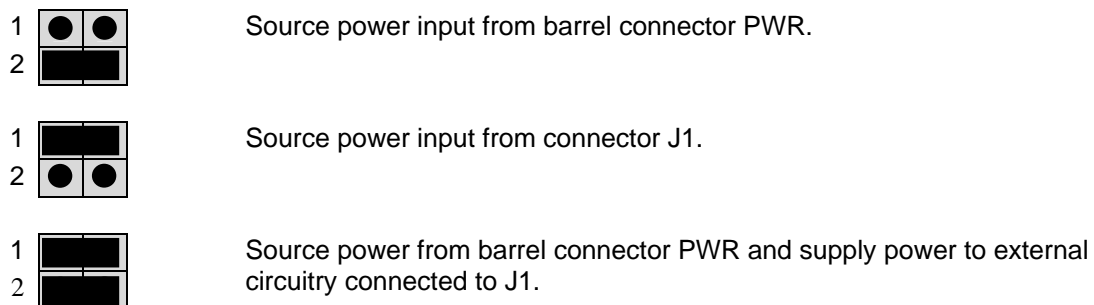
Power may be supplied to the module through the pins J1-1 and J1-2. Use of this option requires a regulated voltage input limited to the range of +3.3VDC to +5VDC. This input is connected directly to the module power and ground planes. Care should be exercised not to over-drive this input. Use of connector J1 to supply +3.3V to the module requires disabling the voltage supervisor (LV1) by opening cut-trace CT-1. See the Low-Voltage Detect section below. To re-enable the low-voltage supervisor, install a 1206 sized 0-ohm resistor at CT1.

Connector J1 may also be used to source +5V power from the on-board regulator to external modules attached to connector J1. The PWR_SEL option header determines how power is routed to the module.

PWR_SEL Jumper

The PWR_SEL jumper is a 4-position option header that configures power routing on the APS12C32SLK module. The module may be powered by an external transformer connected to the PWR connector or through connector J1. The module may also source power to auxiliary modules connected to the connector J1. Damage may occur if the J1 power input pins are over-driven. Refer to the Figure 1 to determine correct PWR_SEL jumper setting.

Figure 1: PWR_SEL



Reset Switch

The RESET switch provides an asynchronous reset input to the MCU. Pressing the RESET switch produces a low-voltage level on the RESET input to the MCU. The low-voltage supervisor (LV1) holds the RESET line low for approximately 150 ms after the pushbutton is released.

Low-Voltage Detect

A DS1813 (LV1) provides POR, low-voltage detect, and pushbutton reset services for the module. At power-on, LV1 holds the MCU in reset for 150 ms after V_{CC} reaches approximately 4.35V. During normal operation, LV1 asserts RESET when V_{CC} falls below 4.35V and holds RESET true for 150 ms after VCC returns to normal. The push-button operation is described in the paragraph above. Use of connector J1 to supply +3.3V to the module requires disabling LV1.

LV1 may be disabled by opening the cut-trace CT1. Simply remove the circuit trace between the cut-trace pads to open the circuit. To restore the circuit functionality, install a 1206 size, 0-ohm, resistor or a short piece of wire across the cut-trace pads.

Timing

A ceramic resonator (Y1) provides a 16.0 MHz base operating frequency to the MCU. This supports a default 8.0 MHz internal operating frequency. Higher frequencies are possible using the embedded PLL. The resonator output is routed to the MCU only and is not available at the MCU Port connector (J1). The MCU ECLK output is available to the user at connector J1 if enabled.

Communications

The APS12C32SLK module provides a single RS-232 communications port. An RS-232 transceiver (U2) provides RS-232 signal level to TTL/CMOS logic level translation. RS232 signals TXD and RXD are routed between the transceiver and the MCU. These signals are also routed to connector J1. RS-232 communication signals input on J1 must be TTL/CMOS logic levels; no translation support is provided through this path. The transceiver output may also be driven off-module if the signals are suitably buffered. As added development support, hardware flow control signals RTS and CTS are available on the logic side of U2. These signals are routed to vias located near the transceiver (U2). RTS has been biased properly to support 2-wire RS-232 communications.

Use of the J1 connector to input RS-232 signals requires disabling the on-board RS-232 transceiver. Otherwise, signal corruption may occur. Disabling the on-board transceiver is accomplished by opening cut-traces CT1, and CT2. Simply remove the circuit trace between the cut-trace pads to open the circuit. To restore the circuit functionality, install a 1206 size, 0-ohm, resistor or a short piece of wire across the cut-trace pads.

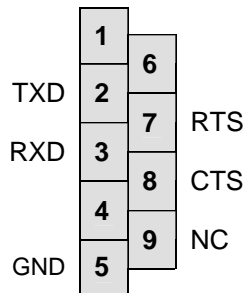
Table 1: Serial COM Signals

COM Signal	MCU Port	Connector	Disable
TXD	PS1/TXD	J1-5	CT5
RXD	PS0/RXD	J1-7	CT4

COM Connector

A standard 9-pin D-Sub connector provides external connections for the COM port. The COM port is configured as a DCE device. Component U2 provides RS-232 translation services. The figure below shows the DB9 connector.

Figure 2: COM Connector



Female DB9 connector that interfaces to the DCE serial port via an RS232 transceiver. It provides simple 2-wire asynchronous serial communications without flow control. A straight-through serial cable may be connected to a DTE device such a PC

Pins 1, 4, and 6 are connected together.

Connector J1

Connector J1 provides access to APS12C32SLK I/O port signals.

Figure 3: MCU_PORT Connector

V _x	1	2	PE1/IRQ*
GND	3	4	RESET*
PS1/TXD	5	6	MODC/BKGD
PS0/RXD	7	8	NC
PP5/KWP5	9	10	NC
PE0/XIRQ*	11	12	NC
PT0/PW0/IOC0	13	14	NC
PT1/PW1/IOC1	15	16	NC
PM4/MOSI	17	18	PAD00/AN00
PM2/MISO	19	20	PAD01/AN01
PM5/SCK	21	22	PB4
PM3/SS*	23	24	PA0
PE4/ELCK	25	26	PM1/TXCAN
PE7/XCLKS	27	28	PM0/RXCAN
PAD02/AN02	29	30	PT2/PW2/IOC2
PAD03/AN03	31	32	PT3/PW3/IOC3
PAD04/AN04	33	34	PT4/PW04/IOC4
PAD05/AN05	35	36	PT5/IOC5
PAD06/AN06	37	38	PT6/IOC6
PAD07/AN07	39	40	PT7/IOC7

Default Signal Assignments		
MCU PORT	Signal	Disable
PS1/TXD	COM1 TXD	CT-5
PS0/RXD	COM1 RXD	CT-4
PE1/IRQ*	SW1	User1
PP5/KWP5	SW2	User2
PA0	LED1	User3
PB4	LED2	User4

Note: Default signal assignment should be disabled to use the signal at connector J1

User Options

User options include 2 LED's, and 2 pushbutton switches. Each user option may be enabled individually using the USER option header. When the appropriate USER option jumper is installed, the associated user option is enabled. Removing a jumper disables the associated user option.

Table 2: User Option Jumper Settings

Jumper	On	Off	MCU Signal
User 1	Enable SW1	Disable SW1	PE0/XIRQ*
User 2	Enable SW2	Disable SW2	PP5 /KWP5
User 3	Enable LED1	Disable LED1	PA0
User 4	Enable LED2	Disable LED2	PB4

Switches

Two push button switches provide momentary, active low, input to the MCU for user applications. Pressing a switch provides a momentary low logic level input tot the MCU. SW1 and SW2 provide input to MCUI/O ports PE0 and PP5 respectively.

LED's

Two LED's provide active-low, visual output for user applications. A low voltage level driven out on the appropriate MCU port causes the LED to light. MCU ports PA0 and PB4 drive LED1 and LED2 respectively.

Development Support

The APS12C32SLK ships from the factory with a serial monitor installed in FLASH. An ASCII monitor is also installed to provide quick and easy debug access to the user. The text monitor is available out of RESET. The serial monitor is available by pressing and holding SW1 as the module exits RESET. In the discussion below, the terms text and ASCII are used interchangeably.

ASCII Monitor Operation

The debug monitor provides a simple application development platform for developing application code. The debug monitor allows the user to quickly and easily develop and debug RAM based application code.

The debug monitor is accessible through the COM port using an ASCII terminal program such as HyperTerminal or AxIDE. The terminal should be configured for 9600, 8, N, 1 with no flow-control. The monitor relocates the hardware interrupt vector table from 0xFF8A:0xFFFF to 0X0F8A:0x0FFF(see Table 3 below). The vectors remain in the same order as the default hardware table. The Reset vector is reserved; user should use autostart to start applications from reset.

ASCII Monitor Memory Map

Table 3: Monitor Memory Map

\$0000 - \$03FF	Registers	1K bytes
	Reserved	
\$0800 - \$0DFF	Internal RAM.	1.5K bytes
\$0E00 - \$0F8B	Monitor Reserved	512 bytes
\$0F8A - \$0FFF	Relocated Interrupt Vector Table	
	Reserved	
\$8000 - \$BFFF	User Program Memory	16K bytes
\$C000 - \$FFFF	Protected Monitor Space	16K bytes

Monitor Commands

Table 4: Monitor Commands

BF <StartAddress> <EndAddress> [<data>]	Block Fill memory range with data
BR [<Address>]	Set/Display user breakpoints
CALL [<Address>]	Call user subroutine at <Address>
GO [<Address>]	Begin/continue execution of user code
<i>HELP</i>	<i>Display the Mon12 command summary</i>
LOAD [P]	Load S-Records into memory, P = Paged S2
MD <StartAddress> [<EndAddress>]	Memory Display Bytes
MM <Address>	Modify Memory Bytes (8 bit values)
MW <Address>	Modify memory Words (16 bit values)
MOVE <StartAddress> <EndAddress> <DestAddress>	Move a block of memory
RD	Display all CPU registers
OFFSET – [arg]	Offset for download
Proceed	Continue program execution
RM	Modify CPU Register Contents
STOPAT <Address>	Trace until address
T [<count>]	Trace <count> instructions

NOTE: Items in Italics are not implemented at this time.

Interrupt Support

All interrupt services under are provided through the relocated vector table, see Table 5 below. Each location in the table is initialized to a value of \$0000 to cause the trap of an unscheduled interrupt. Any nonzero value will allow the interrupt to proceed to the user's service routine that should be located at the address indicated. The interrupt service delay is +21 cycles over the standard interrupt service.

To use vectors specified in the table, the user must insert the address of the interrupt service routine during software initialization into the ram interrupt table. For an example, for the IRQ vector, the following is performed:

Example: IRQ Service routine label = IRQ_SRV
 Ram Vector Table address is defined in table below, IRQ vector definition:
 VIRQ EQU \$0FF2 ; define ram table vector location

Place IRQ service routine address in the table:

```
MOVW        #IRQ_SRV,VIRQ
```

This vector initialization will remain in effect until a RESET is invoked.

Interrupt Vector Table

Table 5: MON12 Interrupt Vector Table

Ram Interrupt Vector Address	MCU Interrupt Vector Address	TRAP code	Vector Source
0F8A	FF8A	02	LVI
0F8C	FF8C	04	PWME
0F8E	FF8E	06	PTPI
0F90	FF90	08	C4TX
0F92	FF92	0A	C4RX
0F94	FF94	0C	C4ERR
0F96	FF96	0E	C4WU
0F98	FF98	10	C3TX
0F9A	FF9A	12	C3RX
0F9C	FF9C	14	C3ERR
0F9E	FF9E	16	C3WU
0FA0	FFA0	18	C2TX
0FA2	FFA2	1A	C2RX
0FA4	FFA4	1C	C2ERR
0FA6	FFA6	1E	C2WU
0FA8	FFA8	20	C1TX
0FAA	FFAA	22	C1RX
0FAC	FFAC	24	C1ERR
0FAE	FFAE	26	C1WU
0FB0	FFB0	28	C0TX
0FB2	FFB2	2A	C0RX
0FB4	FFB4	2C	C0ERR
0FB6	FFB6	2E	C0WU
0FB8	FFB8	30	FEPRG
0FBA	FFBA	32	EEPRG
0FBC	FFBC	34	SPI2
0FBE	FFBE	36	SPI1
0FC0	FFC0	38	I2C
0FC2	FFC2	3A	BDLC
0FC4	FFC4	3C	CRGC
0FC6	FFC6	3E	CRGL
0FC8	FFC8	40	PACBO
0FCA	FFCA	42	MCNT
0FCC	FFCC	44	PTHI
0FCE	FFCE	46	PTJI
0FD0	FFD0	48	ADC1
0FD2	FFD2	4A	ADC0
0FD4	FFD4	4C	SCI1
0FD6	FFD6	4E	SCI0
0FD8	FFD8	50	SPI0
0FDA	FFDA	52	PACAI
0FDC	FFDC	54	PACAO
0FDE	FFDE	56	TOF
0FE0	FFE0	58	TC7
0FE2	FFE2	5A	TC6

Ram Interrupt Vector Address	MCU Interrupt Vector Address	TRAP code	Vector Source
0FE6	FFE6	5E	TC4
0FE8	FFE8	60	TC3
0FEA	FFEA	62	TC2
0FEC	FFEC	64	TC1
0FEE	FFEE	66	TC0
0FF0	FFF0	68	RTI
0FF2	FFF2	6A	IRQ
0FF4	FFF4	6C	XIRQ
0FF6	FFF6	6E	SWI
0FF8	FFF8	70	TRAP
0FFA	FFFA	72	COP
0FFC	FFFC	74	CLM
0FFE	FFFE	76	RESERVED

Serial Monitor Operation

A serial binary monitor is loaded in the MCU internal flash memory. Press and hold SW1 while pressing the RESET button or applying power. This section provides a brief description of this serial monitor operation. Refer to application note AN2548 for complete details on the serial monitor operation. This application note may be found on the Support CD received with the module or from the Freescale web site.

Serial Monitor Memory Map

Table 6: Serial Monitor Memory Map

0x0000 – 0x03FF	Registers	1K bytes
	Reserved	
0x3800 – 0x3FFF	Internal RAM (Relocated)	2K bytes
	Reserved	
0x8000 – 0xBFFF	Fixed Flash EEPROM Block 1 (visible at RESET)	16K bytes
0xC000 – 0xF77F	Fixed Flash EEPROM Block 2	13.8K bytes
0xF780 – 0xF7FF	User Vectors (Relocated) User Reset Vector F7FE:F7FF	2.12K bytes
0xF800 – 0xFFFF	Vectors (Protected)	

NOTE: Although the monitor does not support external memory, the user can enable external memory accesses in the unfilled areas of the memory map.

The 2K-byte serial monitor program provides an RS-232 serial interface to a host PC. Serial data rate is 115.2K bps. The monitor is compatible with Metrowerks CodeWarrior

Development Studio and other serial monitor interface IDE's. The serial monitor is not compatible with ASCII interface programs such as HyperTerm or AxIDE. The monitor supports 23 primitive commands to control the target MCU. To allow a user to specify the address of each interrupt service routine, this monitor redirects interrupt vectors to an unprotected portion of FLASH.

To boot to the serial monitor, the user simply pressed and holds SW1 while pressing the RESET switch or applying power. The status of SW1 is read only during the rising edge of RESET. To load user application on start-up, the user is responsible for programming the pseudo-reset vector (0xF7FE:0xF7FF). Pressing SW1 after the MCU exits reset will not access the serial monitor. After exiting reset, pressing SW1 has effect as defined in the user application.

BDM_PORT Header

BDM access is gained through the BDM_PORT header. This is a 6-pin header that allows connection of a compatible HCS12 BDM cable. Refer to the documentation for the specific BDM cable used for details on its use. The figure below shows the pin-out for the DEBUG header.

Figure 4: BDM_PORT

MODC/BKGD	1	2	GND
	3	4	RESET*
	5	6	VDD

See the HC12 Reference Manual for complete
DEBUG documentation

How to Reach Us:

Home Page:

www.freescale.com

E-mail:

support@freescale.com

USA/Europe or Locations Not Listed:

Freescale Semiconductor
Technical Information Center, CH370
1300 N. Alma School Road
Chandler, Arizona 85224
+1-800-521-6274 or +1-480-768-2130
support@freescale.com

Europe, Middle East, and Africa:

Freescale Halbleiter Deutschland GmbH
Technical Information Center
Schatzbogen 7
81829 Muenchen, Germany
+44 1296 380 456 (English)
+46 8 52200080 (English)
+49 89 92103 559 (German)
+33 1 69 35 48 48 (French)
support@freescale.com

Japan:

Freescale Semiconductor Japan Ltd.
Headquarters
ARCO Tower 15F
1-8-1, Shimo-Meguro, Meguro-ku,
Tokyo 153-0064, Japan
0120 191014 or +81 3 5437 9125
support.japan@freescale.com

Asia/Pacific:

Freescale Semiconductor Hong Kong Ltd.
Technical Information Center
2 Dai King Street
Tai Po Industrial Estate
Tai Po, N.T., Hong Kong
+800 2666 8080
support.asia@freescale.com

For Literature Requests Only:

Freescale Semiconductor Literature Distribution Center
P.O. Box 5405
Denver, Colorado 80217
1-800-441-2447 or 303-675-2140
Fax: 303-675-2150
LDCForFreescaleSemiconductor@hibbertgroup.com

Design and/or Manufacturing services for this product provided by:

Axiom Manufacturing
2813 Industrial Lane
Garland, Tx. 75041
Phone: 972-926-9303
Web: www.axman.com
Email: sales@axman.com

Information in this document is provided solely to enable system and software implementers to use Freescale Semiconductor products. There are no express or implied copyright licenses granted hereunder to design or fabricate any integrated circuits or integrated circuits based on the information in this document.

Freescale Semiconductor reserves the right to make changes without further notice to any products herein. Freescale Semiconductor makes no warranty, representation or guarantee regarding the suitability of its products for any particular purpose, nor does Freescale Semiconductor assume any liability arising out of the application or use of any product or circuit, and specifically disclaims any and all liability, including without limitation consequential or incidental damages. "Typical" parameters that may be provided in Freescale Semiconductor data sheets and/or specifications can and do vary in different applications and actual performance may vary over time. All operating parameters, including "Typicals", must be validated for each customer application by customer's technical experts. Freescale Semiconductor does not convey any license under its patent rights nor the rights of others. Freescale Semiconductor products are not designed, intended, or authorized for use as components in systems intended for surgical implant into the body, or other applications intended to support or sustain life, or for any other application in which the failure of the Freescale Semiconductor product could create a situation where personal injury or death may occur. Should Buyer purchase or use Freescale Semiconductor products for any such unintended or unauthorized application, Buyer shall indemnify and hold Freescale Semiconductor and its officers, employees, subsidiaries, affiliates, and distributors harmless against all claims, costs, damages, and expenses, and reasonable attorney fees arising out of, directly or indirectly, any claim of personal injury or death associated with such unintended or unauthorized use, even if such claim alleges that Freescale Semiconductor was negligent regarding the design or manufacture of the part.

Freescale™ and the Freescale logo are trademarks of Freescale Semiconductor, Inc.

All other product or service names are the property of their respective owners.

© Freescale Semiconductor, Inc. 2006. All rights reserved.