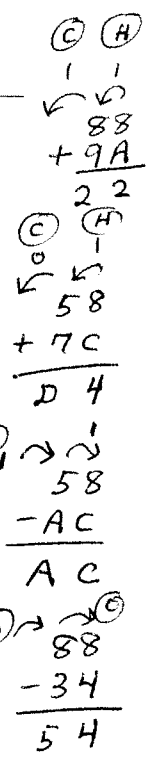


ECE331 (KEH) Quiz 2 9/10/2009 (3 points maximum)

Name: Solution Campus Mail: _____

- LDAA #88
ADDA #9A
After the ADDA executes, A = \$ 22 H = 1 C = 1 N = 0 Z = 0 V = 1
- LDAA #58
ADDA #7C
After the ADDA executes, A = \$ 24 H = 1 C = 0 N = 1 Z = 0 V = 1
- LDAA #58
SUBA #AC
After the ADDA executes, A = \$ AC H = X C = 1 N = 1 Z = 0 V = 1
- LDAA #88
CMPA #34
After the ADDA executes, A = \$ 88 H = X C = 0 N = 0 Z = 0 V = 1
- Target: LDAA #FF
CMPA #2
Bxx Target



cmpA does not modify A

- If Bxx = BEQ, will the program branch to location "Target"? No
- If Bxx = BGE, will the program branch to location "Target"? No
- If Bxx = BHS, will the program branch to location "Target"? Yes
- If Bxx = BRA, will the program branch to location "Target"? Yes

What signed 2-s complement byte value must follow the Bxx op code? \$ FA

(Hint: all 3 of the instructions shown above are 2 bytes long)

