

## Step 2: Install the latest version of Python

All students must have the same version of Python as your instructor has.

**Get help as needed in following these instructions.** The installation may ask you to supply credentials for an administrator (**localmgr**) account; just ask for help if that is not familiar to you.

1. Visit <https://www.python.org/downloads/release/python-370/>.

**Scroll down the page** and select the **Windows x86-64 executable installer**, as shown below:

Version	Operating System	Description	MD5
<a href="#">Gzipped source tarball</a>	Source release		41b6
<a href="#">XZ compressed source tarball</a>	Source release		eb8c
<a href="#">macOS 64-bit/32-bit installer</a>	Mac OS X	for Mac OS X 10.6 and later	ca3e
<a href="#">macOS 64-bit installer</a>	Mac OS X	for OS X 10.9 and later	ae07
<a href="#">Windows help file</a>	Windows		4656
<a href="#">Windows x86-64 embeddable zip file</a>	Windows	for AMD64/EM64T/x64	cb8t
<a href="#">Windows x86-64 executable installer</a>	Windows	for AMD64/EM64T/x64	531c
<a href="#">Windows x86-64 web-based installer</a>	Windows	for AMD64/EM64T/x64	3cfd
<a href="#">Windows x86 embeddable zip file</a>	Windows		ed9a
<a href="#">Windows x86 executable installer</a>	Windows		ebb6
<a href="#">Windows x86 web-based installer</a>	Windows		779c

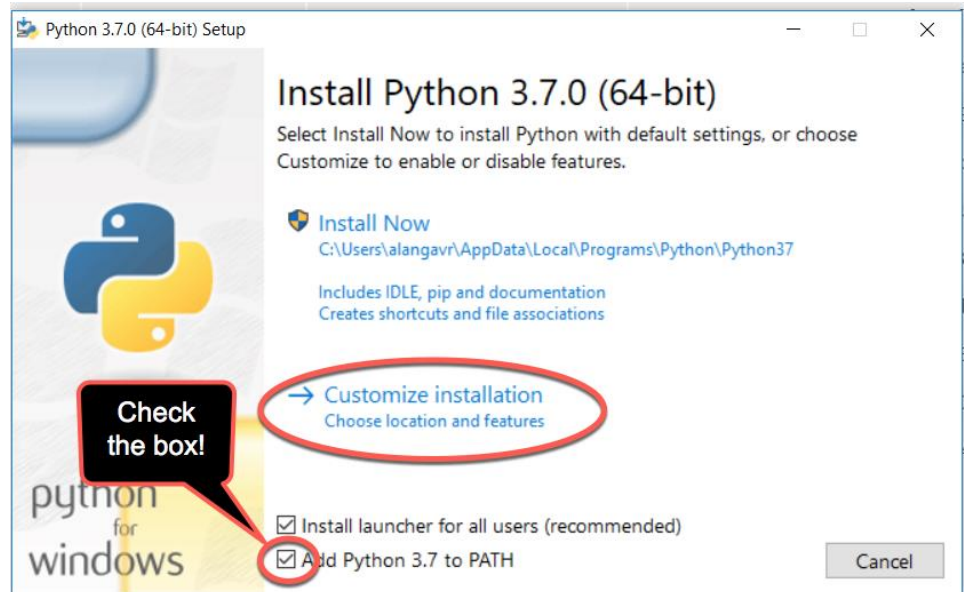
**Click on the link** to **Save** the file to your computer.

*These instructions continue on the next page.*

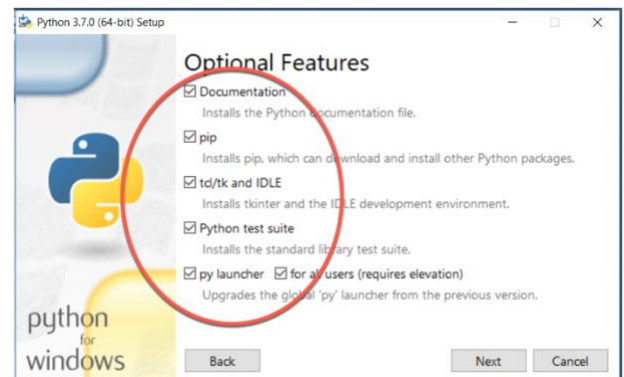
2. Double-click the downloaded file to run the installer, being careful to **follow these instructions**:

a. At the **initial installation window**, as shown below:

- **Check the box** for **“Add Python 3.7 to PATH”** (so both boxes on that page should end up checked).
- Select **“Customize installation.”**



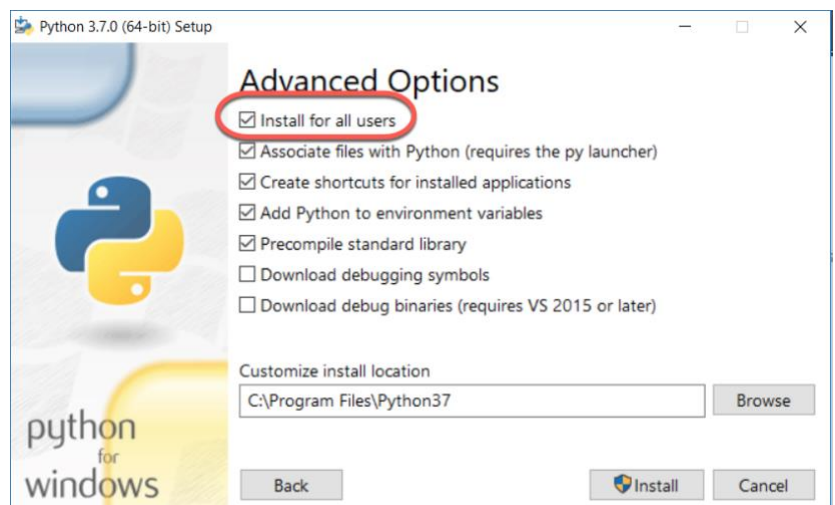
b. On the window that next appears, all boxes should be checked.



c. On the window that appears after that:

- **Check the box** for **“Install for all users”**.

d. Click **Install** and let the installation continue. It takes a minute or two (or three) on most modern computers.



- e. At the end, select **Close**.

