

How to Install the Create robot Simulator

Install the **iRobot Create Simulator** and its **Eclipse plugin**, as follows:

1. Install the **iRobot Create Simulator** by running:

<http://www.rose-hulman.edu/class/csse/binaries/iRobotCreateSimulator/iRobotCreateSimulatorSetup.msi>

Your browser may warn that “*This file is not commonly downloaded and may harm your computer.*” Run anyway. (In IE, choose *Actions*, then *More Options*, then *Run Anyway.*)

Important:

- At the **Select Installation Folder** dialog, **check Everyone**, as shown to the right.
- At the **Optional Components** dialog:
 - **Check Eclipse plugin**, but
 - **leave create.py UN-checked**,
 as shown to the right.

The installation will install DirectX if you don’t already have it (it will probably say you already have a more current version, that’s fine.)

2. The above installation created a folder:

C:\Program Files\iRobot Create Simulator

In that folder, create a new subfolder called:

CurrentEnvironment

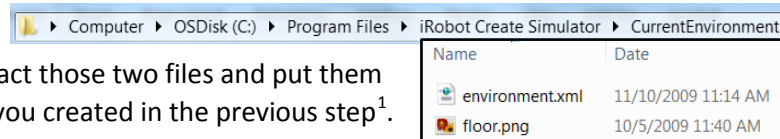
spelled exactly like that (including capitalization, no spaces).

3. Find the ZIP file:

C:\Program Files\iRobot Create Simulator\Resources\Environments\Default.zip

It has two files zipped inside it:

environment.xml and **floor.png**. Extract those two files and put them into the **CurrentEnvironment** folder that you created in the previous step¹.



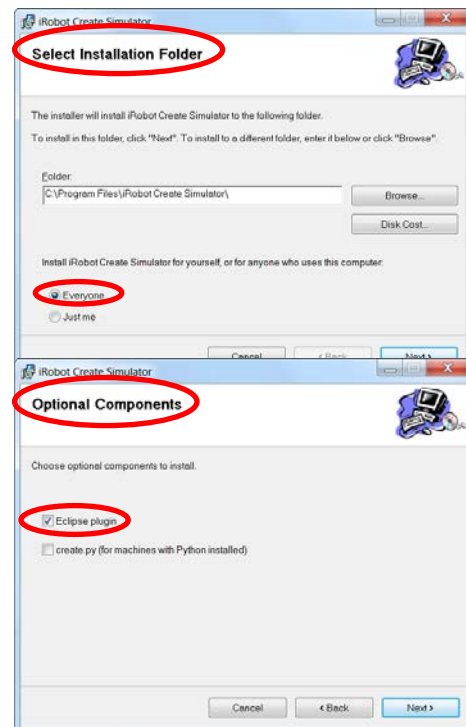
4. Open **Eclipse**. Choose:

Window ~ Preferences ~ iRobot Create Simulator

Select the **Browse** button and browse to the simulator itself, which is:

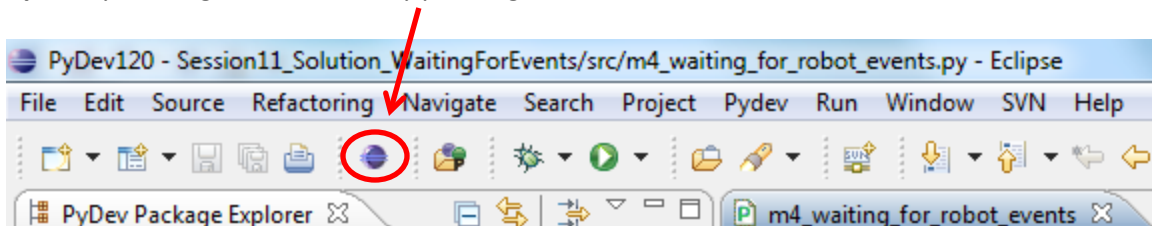
C:\Program Files\iRobot Create Simulator\Roomba Simulator.exe

Press **Open** to select that file, then **OK** to exit the **Preferences** dialog.

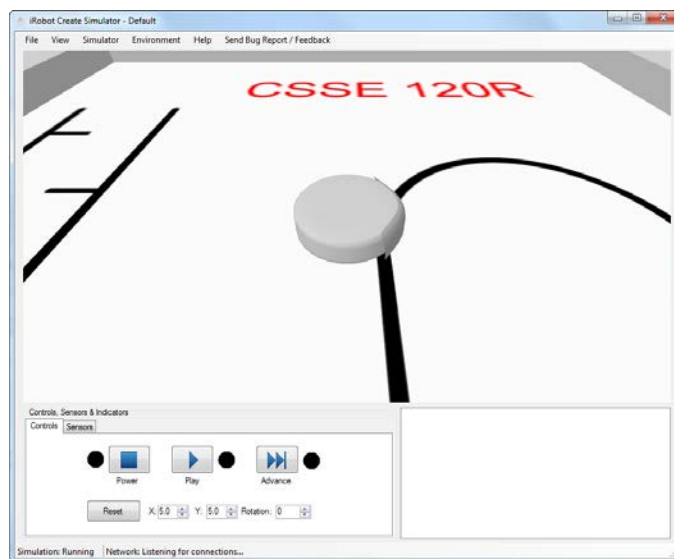


¹ You may need to extract them to (say) your Desktop and then drag them into the folder, giving administrative permissions as you do so.

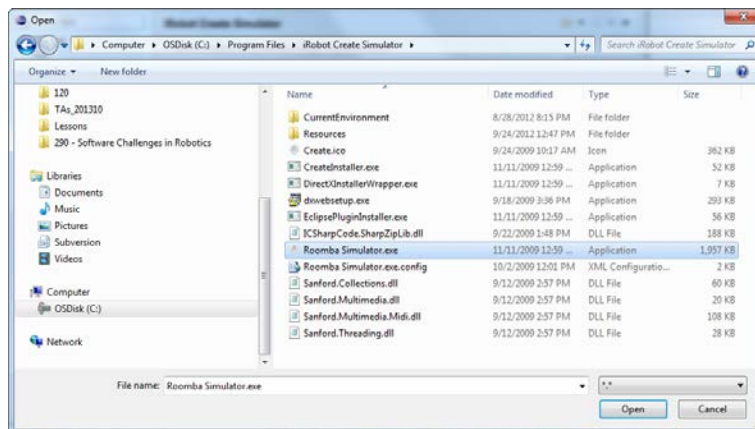
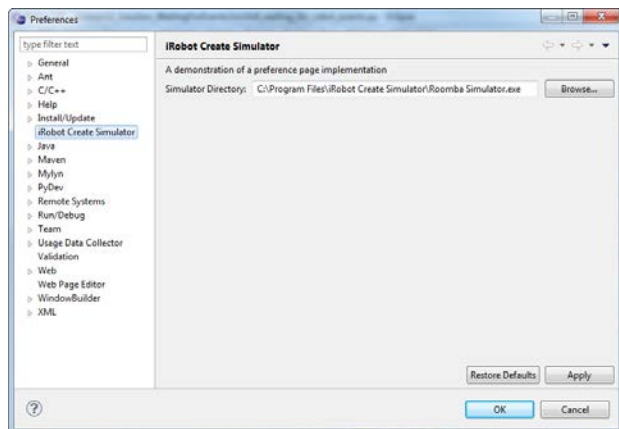
- In **Eclipse**, try running the simulator by pressing its button:



- If the screen shows to the right shows up after about 15 seconds, all is OK. In that case, **STOP here** – you are done with this installation.



- If NOTHING happens after about 15 seconds, go to **Windows ~ Preferences** and select **iRobot Create Simulator**.

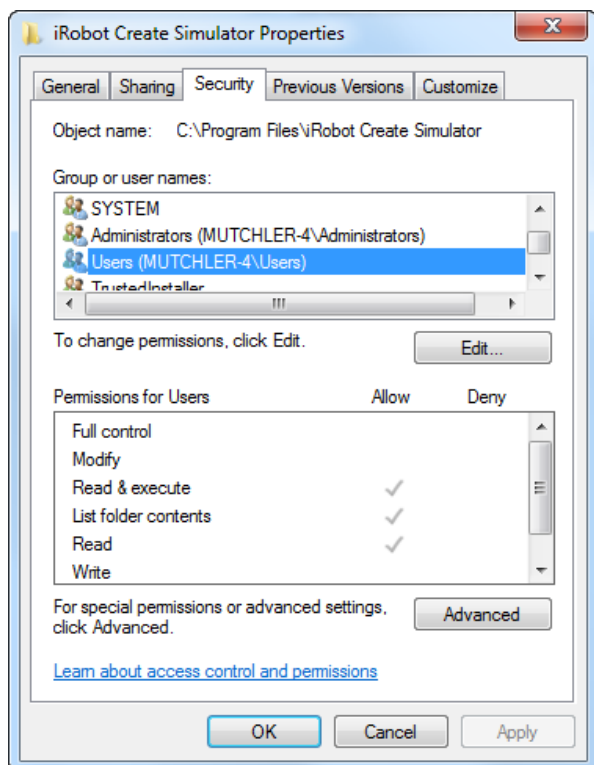


From there, choose the **Browse** button and browse for the **Roomba Simulator.exe** file on your computer. Then press **Open** and **OK** as many times as needed. See if the simulator now opens per the button above.

- If you get an error message about Permissions, continue per the next page.

In your file system, expand **C:\Program Files** and right-click on **iRobot Create Simulator**. Select **Properties**.

Then select the **Security** tab.



Select the **Users** line under **Group or user names**, then select the **Edit** button.

Then select the **Users** line AGAIN under **Group or User names** and check the box under **Allow** for **Full control**.

Press OK as many times as needed. Hopefully your simulator now works.

